

## Xerox Duplex Travel Sheet-fed scanner A4 Blue, White

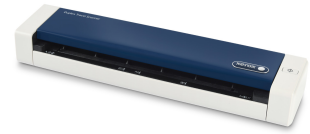
**Brand :** Xerox

**Product code:** 100N03205

**Product name :** Duplex Travel

600 dpi, CIS, 100 pages, 24-bit colour, USB 2.0, 291 x 67 x 40 mm, 0.5 kg

Xerox Duplex Travel. Maximum scan size: 216 x 813 mm, Input colour depth: 24 bit, Output colour depth: 16 bit. Scanner type: Sheet-fed scanner, Product colour: Blue, White. Sensor type: CIS, Daily duty cycle (max): 100 pages, Light source: LED. Maximum ISO A-series paper size: A4, Scanning media types supported: Photo paper, Plain paper, Plastic Card, Auto Document Feeder (ADF) media weight: 60 - 120 g/m<sup>2</sup>. Standard interfaces: USB 2.0



<b>Scanning</b>		<b>Paper handling</b>	
Maximum scan size *	216 x 813 mm	Minimum scan area (ADF)	38 x 38 mm
Colour scanning	✓	<b>Ports &amp; interfaces</b>	
Duplex scanning *	✓	USB port *	✓
Input colour depth	24 bit	USB version	2.0
Output colour depth	16 bit	Standard interfaces	USB 2.0
Output greyscale depth	8 bit	<b>Power</b>	
Film scanning	✗	Power supply type *	USB
Flatbed scan speed (b/w, A4)	9 sec/page	<b>System requirements</b>	
<b>Design</b>		Minimum storage drive space	350 MB
Scanner type *	Sheet-fed scanner	Minimum RAM	2000 MB
Product colour *	Blue, White	Minimum processor	Pentium IV
Built-in display *	✗	Windows operating systems supported	Windows 10, Windows 7, Windows 8, Windows Vista
<b>Performance</b>		Mac operating systems supported	✓
Sensor type *	CIS	<b>Weight &amp; dimensions</b>	
Light source	LED	Width	291 mm
Daily duty cycle (max) *	100 pages	Depth	67 mm
<b>Paper handling</b>		Height	40 mm
Scanning media types supported	Photo paper, Plain paper, Plastic Card	Weight	500 g
Maximum ISO A-series paper size *	A4	<b>Packaging content</b>	
Auto Document Feeder (ADF) media weight	60 - 120 g/m <sup>2</sup>	Cables included	USB
Maximum scan area (ADF)	216 x 813 mm	Quick start guide	✓
		<b>Logistics data</b>	
		Harmonized System (HS) code	84716070



0785414118007



785414118007

Disclaimer. The information published here (the "Information") is based on sources that can be considered reliable, typically the manufacturer, but this Information is provided "AS IS" and without guarantee of correctness or completeness. The Information is only indicative and can be changed at any time without notification. No rights can be based on the Information. Suppliers or aggregators of this Information do not accept any liability with regard to the content of (web)pages and other documents, including its Information. The publisher of the Information can not be held liable for the content of 3rd party websites that are linking this Information or are linked to from this Information. You as the User of the Information are solely responsible for the choice and usage of this Information. You are not entitled to transfer, copy or otherwise multiply or distribute the Information. You are obliged to follow the directions of the copyright owner(s) with regard to the use of the Information. Exclusively Dutch law is applicable. With regard to price and stock data on the site, the publisher followed a number of starting points, which are not necessarily relevant for your private or business circumstances. Therefore, the price and stock data are only indicative and are subject to changes. You are personally responsible for the way you use and apply this information. As a user of the Information or sites or documents in which this Information is included, you will adhere to standard fair use including avoidance of spamming, ripping, intellectual-property violations, privacy violations, and any other illegal activity.