

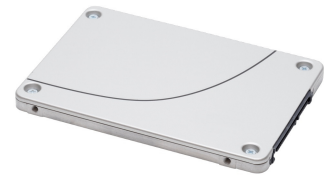


## Lenovo S4500 3.5" 3.84 TB Serial ATA III TLC

**Brand :** Lenovo

**Product code:** 7SD7A05733

**Product name :** S4500



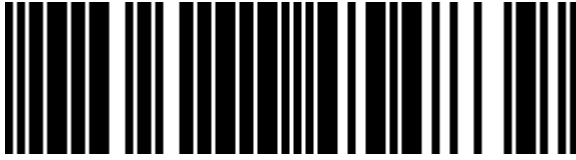
ThinkSystem 3.5" Intel S4500 3.84TB Entry SATA 6Gb Hot Swap SSD

[Lenovo S4500 3.5" 3.84 TB Serial ATA III TLC:](#)

The Intel S4500 Entry SATA solid-state drives (SSDs) for Lenovo servers use Intel 3D NAND TLC Flash Memory technology with a 6Gbps SATA interface to provide an affordable solution with industry leading performance.

This product guide provides essential presales information to understand the S4500 SSD offerings, their key features and specifications, components and options, and configuration guidelines. This guide is intended for technical specialists, sales specialists, sales engineers, IT architects, and other IT professionals who want to learn more about S4500 SSDs and consider their use in IT solutions. Lenovo S4500. SSD capacity: 3.84 TB, SSD form factor: 3.5", Read speed: 500 MB/s, Write speed: 470 MB/s, Data transfer rate: 6 Gbit/s, Component for: Server/workstation

Features		Power	
Security algorithms	256-bit AES	Power consumption (read)	5.6 W
SSD form factor *	3.5"	Power consumption (write)	5.6 W
SSD capacity *	3.84 TB	Operational conditions	
Interface *	Serial ATA III	Operating temperature (T-T)	0 - 70 °C
Memory type *	TLC	Operating relative humidity (H-H)	5 - 95%
Component for *	Server/workstation	Operating vibration	2.17 G
Hardware encryption *	✓	Non-operating vibration	3.13 G
Data transfer rate	6 Gbit/s	Operating shock	1000 G
Read speed	500 MB/s	Weight & dimensions	
Write speed	470 MB/s	Width	70 mm
Random read (4KB)	72000 IOPS	Depth	100 mm
Random write (4KB)	33000 IOPS	Height	7 mm
S.M.A.R.T. support	✓	Weight	63 g
Hot-swap	✓	Other features	
Mean time between failures (MTBF)	2000000 h	Product colour	Silver



0889488454839



889488454839

Disclaimer. The information published here (the "Information") is based on sources that can be considered reliable, typically the manufacturer, but this Information is provided "AS IS" and without guarantee of correctness or completeness. The Information is only indicative and can be changed at any time without notification. No rights can be based on the Information. Suppliers or aggregators of this Information do not accept any liability with regard to the content of (web)pages and other documents, including its Information. The publisher of the Information can not be held liable for the content of 3rd party websites that are linking this Information or are linked to from this Information. You as the User of the Information are solely responsible for the choice and usage of this Information. You are not entitled to transfer, copy or otherwise multiply or distribute the Information. You are obliged to follow the directions of the copyright owner(s) with regard to the use of the Information. Exclusively Dutch law is applicable. With regard to price and stock data on the site, the publisher followed a number of starting points, which are not necessarily relevant for your private or business circumstances. Therefore, the price and stock data are only indicative and are subject to changes. You are personally responsible for the way you use and apply this information. As a user of the Information or sites or documents in which this Information is included, you will adhere to standard fair use including avoidance of spamming, ripping, intellectual-property violations, privacy violations, and any other illegal activity.