



AOC-SLG3-2E4R



User's Guide

Revision 1.0

---

The information in this User's Guide has been carefully reviewed and is believed to be accurate. The vendor assumes no responsibility for any inaccuracies that may be contained in this document, and makes no commitment to update or to keep current the information in this user's guide, or to notify any person or organization of the updates. **Please Note: For the most up-to-date version of this user's guide, please see our Website at [www.supermicro.com](http://www.supermicro.com).**

Super Micro Computer, Inc. ("Supermicro") reserves the right to make changes to the product described in this user's guide at any time and without notice. This product, including software and documentation, is the property of Supermicro and/or its licensors, and is supplied only under a license. Any use or reproduction of this product is not allowed, except as expressly permitted by the terms of said license.

IN NO EVENT WILL SUPER MICRO COMPUTER, INC. BE LIABLE FOR DIRECT, INDIRECT, SPECIAL, INCIDENTAL, SPECULATIVE OR CONSEQUENTIAL DAMAGES ARISING FROM THE USE OR INABILITY TO USE THIS PRODUCT OR DOCUMENTATION, EVEN IF ADVISED OF THE POSSIBILITY OF SUCH DAMAGES. IN PARTICULAR, SUPER MICRO COMPUTER, INC. SHALL NOT HAVE LIABILITY FOR ANY HARDWARE, SOFTWARE, OR DATA STORED OR USED WITH THE PRODUCT, INCLUDING THE COSTS OF REPAIRING, REPLACING, INTEGRATING, INSTALLING OR RECOVERING SUCH HARDWARE, SOFTWARE, OR DATA.

---

Any disputes arising between the manufacturer and the customer shall be governed by the laws of Santa Clara County in the State of California, USA. The State of California, County of Santa Clara shall be the exclusive venue for the resolution of any such disputes. Supermicro's total liability for all claims will not exceed the price paid for the hardware product.

---

FCC Statement: This equipment has been tested and found to comply with the limits for a Class A digital device pursuant to Part 15 of the FCC Rules. These limits are designed to provide reasonable protection against harmful interference when the equipment is operated in a commercial environment. This equipment generates, uses, and can radiate radio frequency energy and, if not installed and used in accordance with the manufacturer's instruction manual, may cause harmful interference with radio communications. Operation of this equipment in a residential area is likely to cause harmful interference, in which case you will be required to correct the interference at your own expense.

---

California Best Management Practices Regulations for Perchlorate Materials: This Perchlorate warning applies only to products containing CR (Manganese Dioxide) Lithium coin cells. "Perchlorate Material-special handling may apply. See [www.dtsc.ca.gov/hazardouswaste/perchlorate](http://www.dtsc.ca.gov/hazardouswaste/perchlorate)".

**WARNING:** Handling of lead solder materials used in this product may expose you to lead, a chemical known to the State of California to cause birth defects and other reproductive harm.

---

User's Guide Revision 1.0

Release Date: December 7, 2016

Unless you request and receive written permission from Super Micro Computer, Inc., you may not copy any part of this document.

Information in this document is subject to change without notice. Other products and companies referred to herein are trademarks or registered trademarks of their respective companies or mark holders.

Copyright © 2016 by Super Micro Computer, Inc.  
All rights reserved.

**Printed in the United States of America**

---

## Preface

### About this User's Guide

This user's guide is written for system integrators, IT technicians and knowledgeable end users. It provides information for the installation and use of the AOC-SLG3-2E4R expansion card.

### About this Expansion Card

The Supermicro NMVe AOC-SLG3-2E4R features two internal NVMe connectors (SFF 8643) for high-performance storage connectivity. This HBA card is built on the latest PCIe NVMe redriver technology. The AOC-SLG3-2E4R is streamlined to meet the growing demand for increased data throughput and scalability requirements across the enterprise-class server platforms. It is a low power and cost-effective near-line storage solution that delivers maximum performance and reliability.

### An Important Note to the User

All images and layouts shown in this user's guide are based upon the latest PCB revision available at the time of publishing. The card you have received may or may not look exactly the same as the graphics shown in this user's guide.

---

## Returning Merchandise for Service

A receipt or copy of your invoice marked with the date of purchase is required before any warranty service will be rendered. You can obtain service by calling your vendor for a Returned Merchandise Authorization (RMA) number. When returning the AOC-SLG3-2E4R card to the manufacturer, the RMA number should be prominently displayed on the outside of the shipping carton, and the shipping package is mailed prepaid or hand-carried. Shipping and handling charges will be applied for all orders that must be mailed when service is complete. For faster service, you can also request a RMA authorization online <http://www.supermicro.com/RmaForm/>.

This warranty only covers normal consumer use and does not cover damages incurred in shipping or from failure due to the alternation, misuse, abuse or improper maintenance of products.

---

## Contacting Supermicro

### Headquarters

Address: Super Micro Computer, Inc.  
980 Rock Ave.  
San Jose, CA 95131 U.S.A.

Tel: +1 (408) 503-8000

Fax: +1 (408) 503-8008

Email: [marketing@supermicro.com](mailto:marketing@supermicro.com) (General Information)  
[support@supermicro.com](mailto:support@supermicro.com) (Technical Support)

Website: [www.supermicro.com](http://www.supermicro.com)

### Europe

Address: Super Micro Computer B.V.  
Het Sterrenbeeld 28, 5215 ML  
's-Hertogenbosch, The Netherlands

Tel: +31 (0) 73-6400390

Fax: +31 (0) 73-6416525

Email: [sales@supermicro.nl](mailto:sales@supermicro.nl) (General Information)  
[support@supermicro.nl](mailto:support@supermicro.nl) (Technical Support)  
[rma@supermicro.nl](mailto:rma@supermicro.nl) (Customer Support)

Website: [www.supermicro.nl](http://www.supermicro.nl)

### Asia-Pacific

Address: Super Micro Computer, Inc.  
3F, No. 150, Jian 1st Rd.  
Zhonghe Dist., New Taipei City 235  
Taiwan (R.O.C)

Tel: +886-(2) 8226-3990

Fax: +886-(2) 8226-3992

Email: [support@supermicro.com.tw](mailto:support@supermicro.com.tw)

Website: [www.supermicro.com.tw](http://www.supermicro.com.tw)

# Table of Contents

## **Preface**

About this User's Guide .....	iii
About this Expansion Card.....	iii
An Important Note to the User.....	iii
Returning Merchandise for Service.....	iv
Contacting Supermicro.....	v

## **Chapter 1 Overview**

1-1 Overview .....	1-1
1-2 Technical Specifications .....	1-1
General.....	1-1
OS Support .....	1-1
Power Consumption.....	1-1
Physical Dimensions.....	1-1

## **Chapter 2 Hardware Components**

2-1 Expansion Card Layout and Components.....	2-1
2-2 Major Components.....	2-2
2-3 Connectors and LEDs.....	2-3
NVMe Connectors.....	2-3
2-4 Front Jumper Location and Settings.....	2-4
Explanation of Jumpers .....	2-4

## **Chapter 3 Installation**

3-1 Static-Sensitive Devices.....	3-1
Precautions .....	3-1
Unpacking .....	3-1
3-2 Before Installation .....	3-2
3-3 Installing the Expansion Card.....	3-2
3-4 Static-Sensitive Devices.....	3-5
Precautions .....	3-5
Unpacking .....	3-5
3-5 Installing the Drivers in Windows.....	3-6
3-6 Uninstalling the Drivers.....	3-6

# Chapter 1

## Overview

### 1-1 Overview

Congratulations on purchasing your expansion card from an acknowledged leader in the industry. Supermicro products are designed with the utmost attention to detail to provide you with the highest standards in quality and performance. For product support and updates, please visit our website at <http://www.supermicro.com/>

### 1-2 Technical Specifications

#### General

Low power, dual port PCI-E Gen-3 NVMe controller

Four internal lanes per MiniSAS HD port, 3.2GB/s per port

Supports two physical NVMe devices

Ambient operating temperature from 10°C - 55°C

Supports X10DRW-i, X10DRW-iT, X10DRH-CT, X10DRL-CT and X10DRH motherboards.

#### OS Support

Windows, Linux, VMware

#### Power Consumption

2 Watts

#### Physical Dimensions

Card PCB dimensions: 3.79" x 2.71" (L x H)

## Notes

## Chapter 2

### Hardware Components

#### 2-1 Expansion Card Layout and Components



**Figure 2-1. AOC-SLG3-2E4R**

The AOC-SLG3-2E4R is a low-profile expansion card with an aggregate 6.4 GB/s dual-port NVMe internal Host Bus Adapter. The following pages describe the components and settings for the AOC-SLG3-2E4R.

## 2-2 Major Components

The following are the major components that make up the AOC-SLG3-2E4R expansion card:

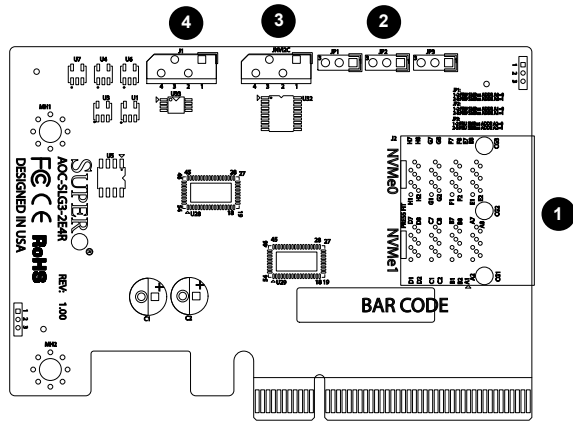


Figure 2-2. AOC-SLG3-2E4R Layout

AOC-SLG3-2E4R	
Component	Description
1	NVMe Connectors NVMe 0 and NVMe1
2	Jumpers JP1, JP2 and JP3
3	SMBus I <sup>2</sup> C Connector JNV12C
4	Connector J1, not populated on the card

## 2-3 Connectors and LEDs

### NVMe Connectors

There are two NVMe connectors on the expansion card. Together these connectors provide a transfer rate speed of up to 6.4 GB/s.

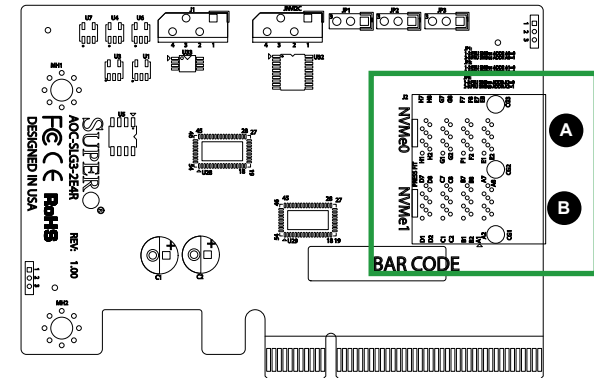


Figure 2-3. NVMe Connectors

AOC-SLG3-2E4R	
Component	Description
A	NVMe connector, designated NVMe 0
B	NVMe connector, designated NVMe 1



## 2-4 Front Jumper Location and Settings

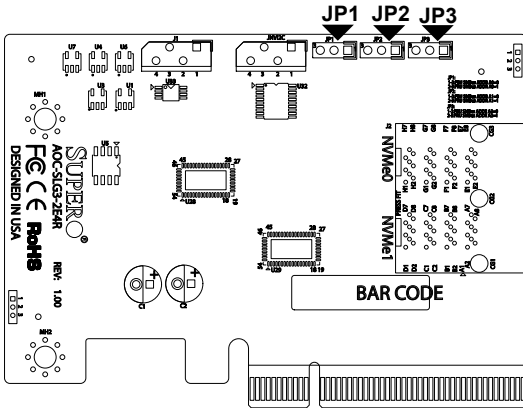
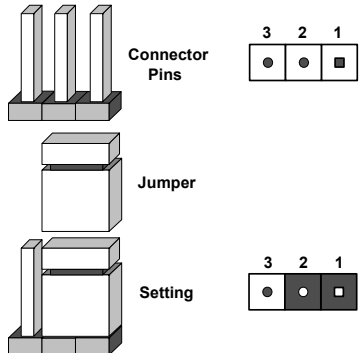


Figure 2-4. Front Jumpers

### Explanation of Jumpers

To modify the operation of the backplane, jumpers can be used to choose between optional settings. Jumpers create shorts between two pins to change the function of the connector. Pin 1 is identified with a square solder pad on the printed circuit board. Note: On two pin jumpers, "Closed" means the jumper is on and "Open" means the jumper is off the pins.



Note: Unless explicitly instructed otherwise by the manufacturer, do not move the jumpers from their default locations of pins 1-2. Doing so will likely cause the card to become disabled.

Table of Addresses Based on Jumper Settings

MSN	JP3 A2	JP2 A1	JP1 A0	LSB	Hex Address
1010	0	0	0	0	A 0
1010	0	0	1	0	A 2
1010	0	1	0	0	A 4
1010	0	1	1	0	A 6
1010	1	0	0	0	A 8
1010	1	0	1	0	A A
1010	1	1	0	0	A C
1010	1	1	1	0	A E

## Chapter 3

# Installation

### 3-1 Static-Sensitive Devices

Electrostatic Discharge (ESD) can damage electronic components. To avoid damaging your expansion card, it is important to handle it very carefully. The following measures are generally sufficient to protect your equipment from ESD.

#### Precautions

- Use a grounded wrist strap designed to prevent static discharge.
- Touch a grounded metal object before removing the expansion card from the antistatic bag.
- Handle the expansion card by its edges only; do not touch its components or peripheral chips.
- Put the expansion card back into the antistatic bags when not in use.
- For grounding purposes, make sure that your system chassis provides excellent conductivity between the power supply, the case, the mounting fasteners and the expansion card.

#### Unpacking

The expansion card is shipped in antistatic packaging to avoid static damage. When unpacking your component, make sure you are static protected.

**Note:** To avoid damaging your components and to ensure proper installation, be sure to always connect the power cord last, and always remove it before adding, removing or changing any hardware components.

### 3-2 Before Installation

To install the expansion card properly, follow the steps below.

1. Power down the system and unplug the power cord.
2. Use industry-standard anti-static equipment (such as gloves or wrist strap) and follow the precautions on page 3-1 to avoid damage caused by ESD.

### 3-3 Installing the Expansion Card

Depending upon which motherboard is used and which slot in the motherboard is selected, a riser card may or may not be required to install the AOC-SLG3-2E4R. Refer to the chart below to determine the method of installation for your expansion card.

1. Power down the system, remove the power cords from the rear of the power supply and remove the system cover.
2. Verify that your expansion card is equipped with the correct length of PCIe slot bracket for your system. AOC-SLG3-2E4R expansion cards include a low-profile PCIe bracket. However, if your system features full-length PCIe slots, replace the low-profile bracket with a full-length bracket.
3. Determine the correct method of installation for your motherboard:

AOC-SLG3-2E4R Installation Methods	
MB	Installation Method
X10DRW-i	Install a bracket onto the AOC-SLG3-2E4R expansion card. Install the riser card into the slot on the motherboard. Install the AOC-SLG3-2E4R onto the riser card. Secure the bracket to the chassis with a screw.
X10DRW-iT	Install a bracket onto the AOC-SLG3-2E4R expansion card. Install the riser card into the slot on the motherboard. Install the AOC-SLG3-2E4R onto the riser card. Secure the bracket to the chassis with a screw.
X10DRH-CT	Install a bracket onto the AOC-SLG3-2E4R expansion card. Install the expansion card into slot 6 on the motherboard. Secure the bracket to the chassis with a screw.
X10DRL-CT	Install a bracket onto the AOC-SLG3-2E4R expansion card. Install the expansion card into slot 6 on the motherboard. Secure the bracket to the chassis with a screw.
X10DRH	Install a bracket onto the AOC-SLG3-2E4R expansion card. Install the expansion card into slot 1 or slot 7 on the motherboard. Secure the bracket to the chassis with a screw.

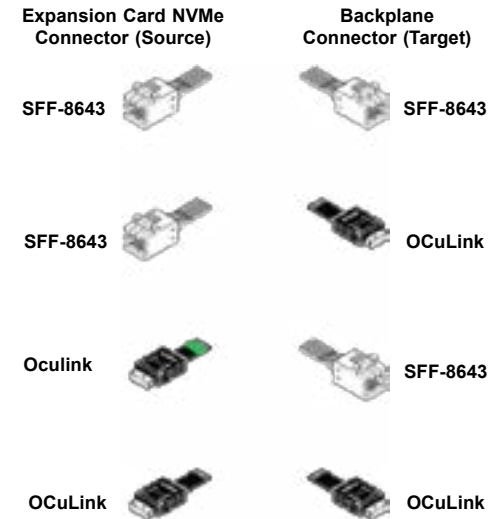


Figure 3-1. Cable Types

4. Using the chart above, verify that the cable provided is appropriate for the expansion card connectors and the backplane connectors. Note that the MiniSAS HD to OCuLink cables and the OCuLink to MiniSAS HD cables may physically look the same but are wired differently and may not work if the wrong cable is used. Verify that the appropriate cable was included. For example, if your expansion card has OCuLink connectors and is plugging into a MiniSAS HD backplane, a cable with a green-marking at the OCuLink end must be used.

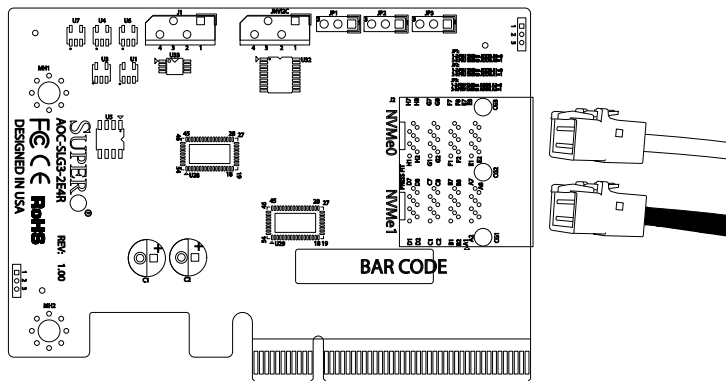


Figure 3-2. Connecting the Cables

5. Connect the cables to the expansion card. The cable latch will click into the locked position when connected properly.
6. Replace the system cover, plug in the power cord and power up the system.

### 3-4 Static-Sensitive Devices

Electrostatic Discharge (ESD) can damage electronic components. To avoid damaging your expansion card, it is important to handle it very carefully. The following measures are generally sufficient to protect your equipment from ESD.

#### Precautions

- Use a grounded wrist strap designed to prevent static discharge.
- Touch a grounded metal object before removing the expansion card from the antistatic bag.
- Handle the expansion card by its edges only; do not touch its components or peripheral chips.
- Put the expansion card back into the antistatic bags when not in use.
- For grounding purposes, make sure that your system chassis provides excellent conductivity between the power supply, the case, the mounting fasteners and the expansion card.

#### Unpacking

The expansion card is shipped in antistatic packaging to avoid static damage. When unpacking your component, make sure you are static protected.

**Note:** To avoid damaging your components and to ensure proper installation, be sure to always connect the power cord last, and always remove it before adding, removing or changing any hardware components

### 3-5 Installing the Drivers in Windows

Refer to the instructions that came with your expansion card and follow the manufacturer's recommended steps for installing the NVMe driver. Download the latest drivers from the Supermicro project board at <ftp://ftp.supermicro.com/driver/NVMe/>.

### 3-6 Uninstalling the Drivers

***To Uninstall the Drivers in Windows:***

Follow the instructions provided by the manufacturer.

***To Uninstall the Drivers in Linux:***

Run the following command to uninstall the NVMe drivers:

```
./RemoveService.sh
```

## Notes

(Disclaimer Continued)

The products sold by Supermicro are not intended for and will not be used in life support systems, medical equipment, nuclear facilities or systems, aircraft, aircraft devices, aircraft/emergency communication devices or other critical systems whose failure to perform be reasonably expected to result in significant injury or loss of life or catastrophic property damage. Accordingly, Supermicro disclaims any and all liability, and should buyer use or sell such products for use in such ultra-hazardous applications, it does so entirely at its own risk. Furthermore, buyer agrees to fully indemnify, defend and hold Supermicro harmless for and against any and all claims, demands, actions, litigation, and proceedings of any kind arising out of or related to such ultra-hazardous use or sale.