



D-Link 16-Port Gigabit Unmanaged Switch

Brand : D-Link

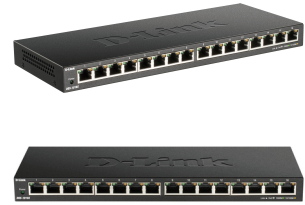
Product code: DGS-1016S

Product name : 16-Port Gigabit Unmanaged Switch

- 16 x Gigabit ports
- Slim, low profile design for desktop or wall mount
- Plug & Play simplicity for easy installation
- Silent operation with fanless design

16-Port Gigabit Unmanaged Switch

D-Link 16-Port Gigabit Unmanaged Switch. Switch type: Unmanaged. Basic switching RJ-45 Ethernet ports type: Gigabit Ethernet (10/100/1000), Basic switching RJ-45 Ethernet ports quantity: 16. Full duplex. MAC address table: 8000 entries, Switching capacity: 32 Gbit/s. Networking standards: IEEE 802.1p, IEEE 802.3az, IEEE 802.3x. DC input voltage: 12 V



Management features		Data transmission	
Switch type *	Unmanaged	Packet buffer memory	0.512 MB
Quality of Service (QoS) support	✓	Design	
Ports & interfaces		Product colour	Black
Basic switching RJ-45 Ethernet ports quantity *	16	LED indicators	Activity, Link, Power, Speed
Basic switching RJ-45 Ethernet ports type *	Gigabit Ethernet (10/100/1000)	Safety	LVD
Network		Certification	CE, FCC, ICES 003, RCM
Networking standards *	IEEE 802.1p, IEEE 802.3az, IEEE 802.3x	Performance	
10G support *	✗	Plug and Play	✓
Copper ethernet cabling technology	1000BASE-T	Fanless	✓
Full duplex	✓	Mean time between failures (MTBF)	564658 h
Half duplex	✓	Power	
Flow control support	✓	DC input voltage	12 V
Auto MDI/MDI-X	✓	Input current	1 A
Auto-negotiation	✓	Power consumption (max)	8.89 W
Cable length detection	✓	Power over Ethernet (PoE)	
Data transmission		Power over Ethernet (PoE) *	✗
Switching capacity *	32 Gbit/s	Operational conditions	
MAC address table *	8000 entries	Operating temperature (T-T)	0 - 40 °C
Store-and-forward	✓	Storage temperature (T-T)	-40 - 70 °C
Number of queues	8	Operating relative humidity (H-H)	10 - 90%
Jumbo frames support	✓	Storage relative humidity (H-H)	5 - 95%
Jumbo frames	9216	Heat dissipation	30.32 BTU/h
Packet forwarding rate (1 Gbps)	1488000 pps	Weight & dimensions	
Packet forwarding rate (100 Mbps)	148800 pps	Width	280 mm
Packet forwarding rate (10 Mbps)	14880 pps	Depth	110 mm
		Height	25 mm
		Weight	770 g
		Logistics data	
		Harmonized System (HS) code	85176990



0790069455261



790069455261



0790069464256



790069464256

Disclaimer. The information published here (the "Information") is based on sources that can be considered reliable, typically the manufacturer, but this Information is provided "AS IS" and without guarantee of correctness or completeness. The Information is only indicative and can be changed at any time without notification. No rights can be based on the Information. Suppliers or aggregators of this Information do not accept any liability with regard to the content of (web)pages and other documents, including its Information. The publisher of the Information can not be held liable for the content of 3rd party websites that are linking this Information or are linked to from this Information. You as the User of the Information are solely responsible for the choice and usage of this Information. You are not entitled to transfer, copy or otherwise multiply or distribute the Information. You are obliged to follow the directions of the copyright owner(s) with regard to the use of the Information. Exclusively Dutch law is applicable. With regard to price and stock data on the site, the publisher followed a number of starting points, which are not necessarily relevant for your private or business circumstances. Therefore, the price and stock data are only indicative and are subject to changes. You are personally responsible for the way you use and apply this information. As a user of the Information or sites or documents in which this Information is included, you will adhere to standard fair use including avoidance of spamming, ripping, intellectual-property violations, privacy violations, and any other illegal activity.