



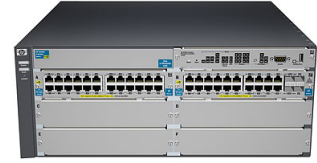
HP ProCurve 5406-44G-PoE+-4G-SFP v2 zl Managed L3 Gigabit Ethernet (10/100/1000) Power over Ethernet (PoE) 4U Grey

Brand : HP

Product family: ProCurve

Product code: J9539AR

Product name : 5406-44G-PoE+-4G-SFP v2 zl



HP 5406-44G-PoE+-4G-SFP v2 zl Switch with Premium Software

HP ProCurve 5406-44G-PoE+-4G-SFP v2 zl. Switch type: Managed, Switch layer: L3. Basic switching RJ-45 Ethernet ports type: Gigabit Ethernet (10/100/1000), Basic switching RJ-45 Ethernet ports quantity: 44. Full duplex. MAC address table: 64000 entries, Switching capacity: 379.2 Gbit/s. Networking standards: IEEE 802.3, IEEE 802.3ab, IEEE 802.3at, IEEE 802.3u. Power over Ethernet (PoE). Rack mounting, Form factor: 4U

Management features		Security	
Switch type *	Managed	DHCP features	DHCP server, DHCP client
Switch layer	L3	Access Control List (ACL)	✓
Quality of Service (QoS) support	✓	IGMP snooping	✓
Web-based management	✓	SSH/SSL support	✓
Ports & interfaces		Multicast features	
Basic switching RJ-45 Ethernet ports quantity *	44	Multicast support	✓
Basic switching RJ-45 Ethernet ports type *	Gigabit Ethernet (10/100/1000)	Design	
SFP module slots quantity	4	Rack mounting *	✓
Network		Form factor	4U
Networking standards *	IEEE 802.3, IEEE 802.3ab, IEEE 802.3at, IEEE 802.3u	Product colour	Grey
10G support *	✓	Performance	
Copper ethernet cabling technology	1000BASE-T, 100BASE-TX, 10BASE-T	Built-in processor	✓
Full duplex	✓	Memory type	DDR-SDRAM
IP routing	✓	Internal memory	256 MB
Auto MDI/MDI-X	✓	Flash memory	4 MB
Spanning tree protocol	✓	Power	
Auto-sensing	✓	Power supply included *	✓
VLAN support	✓	AC input voltage	100 - 240 V
Data transmission		AC input frequency	50 - 60 Hz
Switching capacity *	379.2 Gbit/s	Power consumption (typical)	215 W
Throughput	282.1 Mpps	Power over Ethernet (PoE)	
MAC address table *	64000 entries	Power over Ethernet (PoE) *	✓
Latency (1 Gbps)	3.7 µs	Operational conditions	
Latency (10 Gbps)	2.1 µs	Operating temperature (T-T)	0 - 55 °C
Weight & dimensions		Heat dissipation	2450 BTU/h
Width	444.5 mm	Weight & dimensions	
Depth	450.9 mm	Width	444.5 mm
Height	175.3 mm	Depth	450.9 mm
		Height	175.3 mm

Weight & dimensions

Weight 20.7 kg

Disclaimer. The information published here (the "Information") is based on sources that can be considered reliable, typically the manufacturer, but this Information is provided "AS IS" and without guarantee of correctness or completeness. The Information is only indicative and can be changed at any time without notification. No rights can be based on the Information. Suppliers or aggregators of this Information do not accept any liability with regard to the content of (web)pages and other documents, including its Information. The publisher of the Information can not be held liable for the content of 3rd party websites that are linking this Information or are linked to from this Information. You as the User of the Information are solely responsible for the choice and usage of this Information. You are not entitled to transfer, copy or otherwise multiply or distribute the Information. You are obliged to follow the directions of the copyright owner(s) with regard to the use of the Information. Exclusively Dutch law is applicable. With regard to price and stock data on the site, the publisher followed a number of starting points, which are not necessarily relevant for your private or business circumstances. Therefore, the price and stock data are only indicative and are subject to changes. You are personally responsible for the way you use and apply this information. As a user of the Information or sites or documents in which this Information is included, you will adhere to standard fair use including avoidance of spamming, ripping, intellectual-property violations, privacy violations, and any other illegal activity.